

IU Sustainability

South Central Indiana Sustainable Energy

Symposium– March 24, 2015



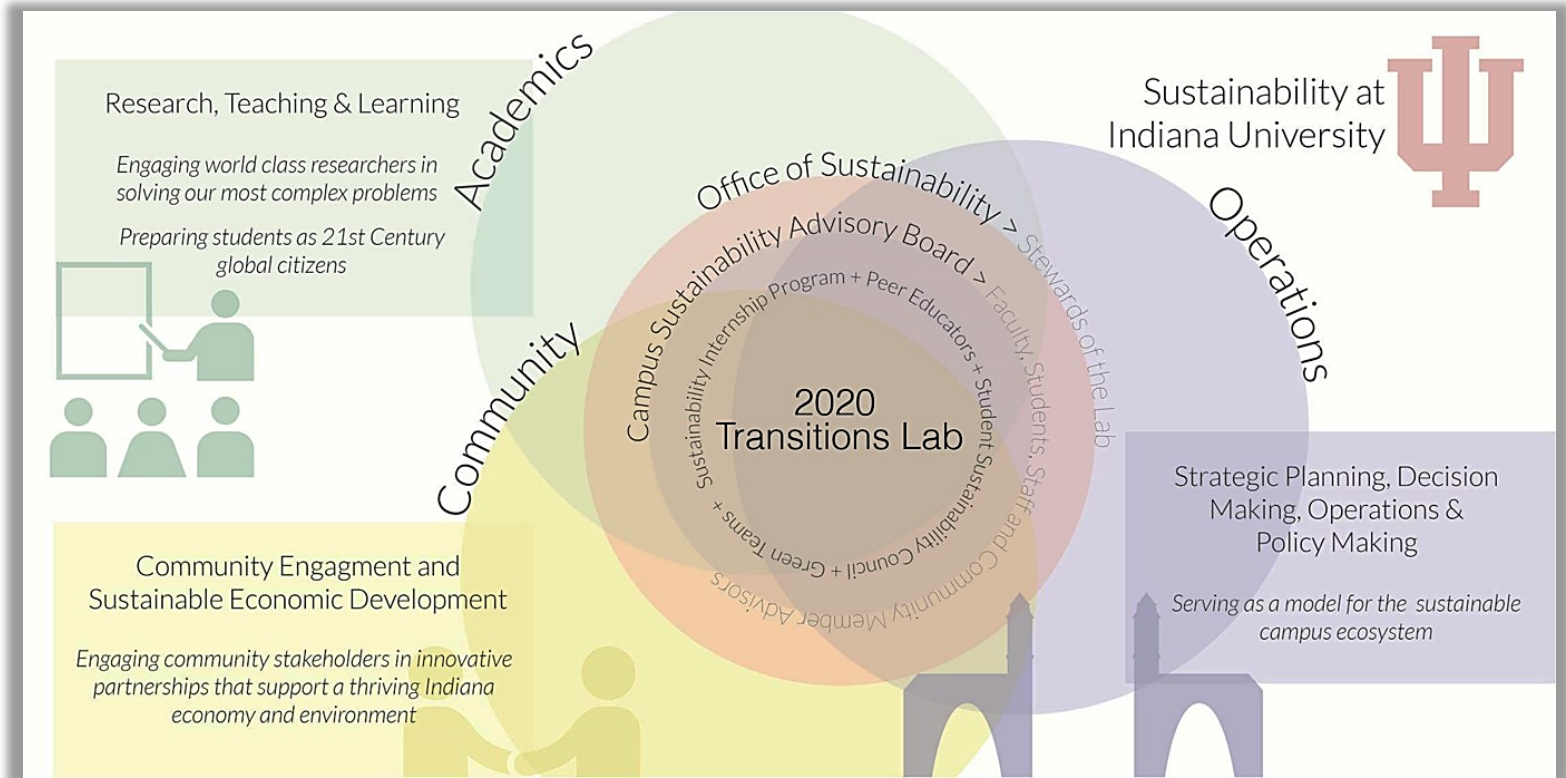
INDIANA UNIVERSITY



HERITAGE
BY



INDIANA UNIVERSITY



Fostering collaboration between operations, academics and the Hoosier community to accelerate student learning and sustainability



Sustainability Working Groups

- Education and Research
- Environmental Quality and Land Use
- Energy and Built Environment
- Food
- Resource Use and Recycling
- Sustainable IT
- Transportation



INDIANA UNIVERSITY







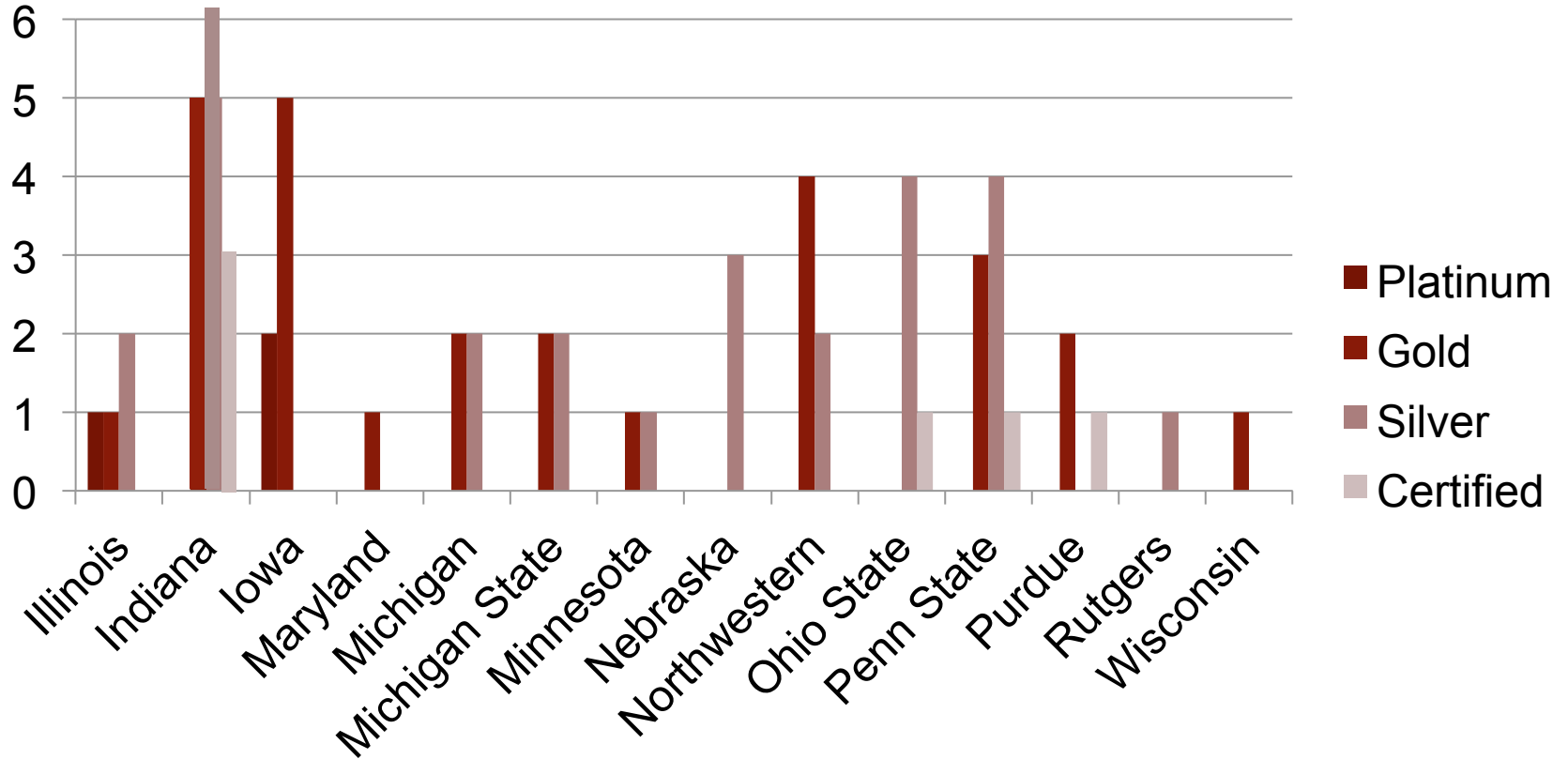
LEED Projects at Indiana University



1. *IU Research and Teaching Field Lab (Silver)*
2. *Innovation Center (Silver)*
3. *Community Building (IUSB Housing)(Silver)*
4. *Multi-Disciplinary Science Building II (Silver)*
5. *Jacobs School of Music Faculty Studio Building (Gold)*
6. *Cyber Infrastructure Building (Gold)*
7. *Tulip Tree Apartments (Silver)*
8. *Glick Eye Institute (IUPUI) (Silver)*
9. *Rose Hall (Gold)*
10. *Third and Union Apartments (Gold)*
11. *Rotary Building (Silver)*
12. *Neurosciences Research (Gold)*
13. *IUSB Education and Arts Building (Certified)*
14. *Science and Engineering Lab Building (Silver)*



Big Ten LEED Buildings



The
Average
Green
Building
Saves:



**ENERGY
SAVINGS**
30%



**CO2
SAVINGS**
35-50%



**WATER
USE
SAVINGS**
35-50%



**WASTE
COST
SAVINGS**
50-90%



Health gains from improved Indoor Air Quality

As indicated by reduced symptoms for flu, asthma, allergies, respiratory infections, headaches, and colds.



Green Building Projects

Office of Sustainability > Programs > Green Building Projects

Indiana University has adopted a minimum of LEED Silver certification as part of its design standards for all new construction and major building renovations. View IU LEED projects below.

Research and Teaching Preserve

LEED Certification: Silver


[Learn More »](#)



IU Innovation Center

LEED certification: Silver


[Learn More »](#)



University Center (SB)

LEED Certification: Silver

[Learn More »](#)



Multidisciplinary Science Building II

LEED certification: Silver

[Learn More »](#)



Eugene and Marilyn Glick Eye Institute

LEED Certification: Gold

[Learn More »](#)



Cyberinfrastructure Building (CIB)

LEED Certification: Gold

[Learn More »](#)

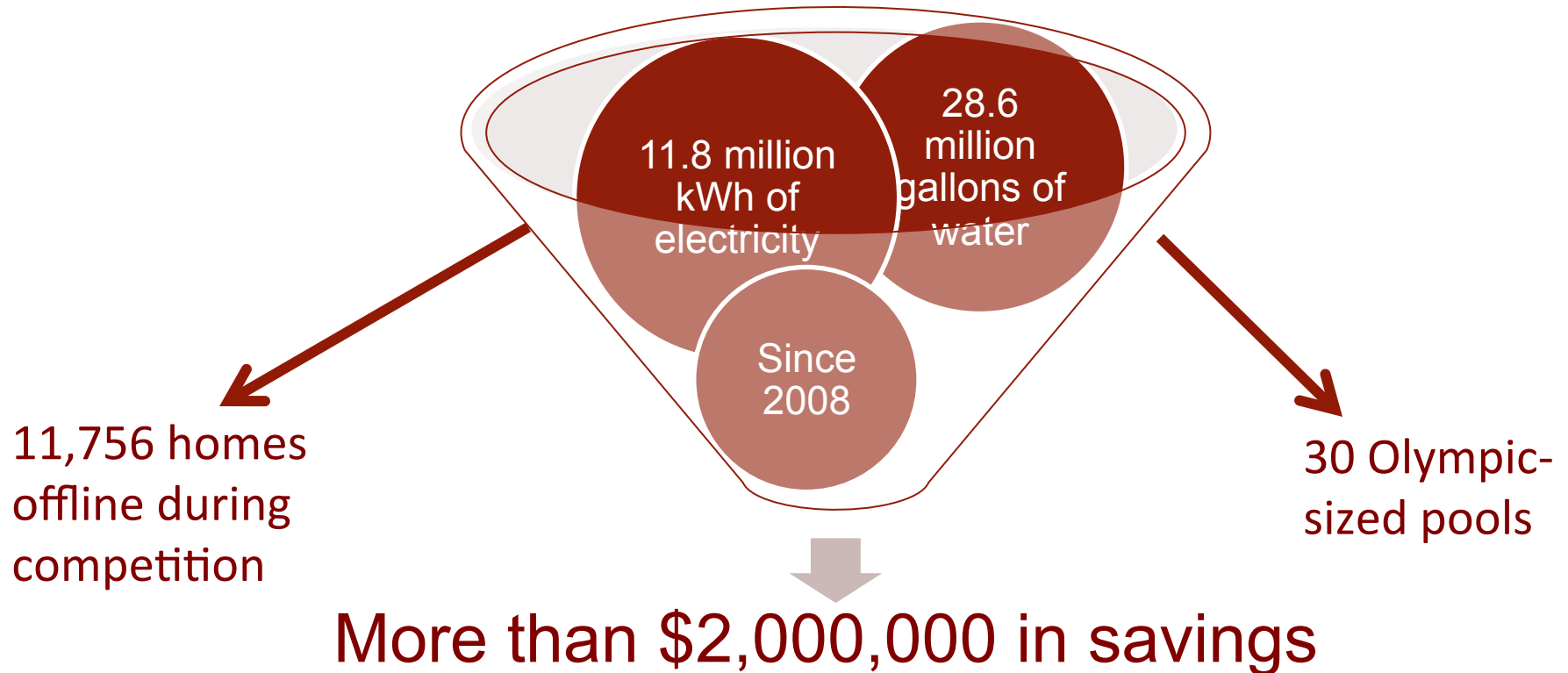









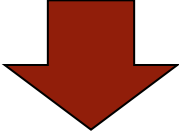

INDIANA UNIVERSITY

Energy Challenge Total Savings





Developing Strategies

Behavior	Barriers	Benefits
Encourage		
Discourage		



Fostering Sustainable Behavior

COMMUNITY-BASED SOCIAL MARKETING



Preface

Table of Contents

[Preface](#)

[How to Use this Book](#)

[Fostering Sustainable Behavior](#)

[Step 1: Selecting Behaviors](#)

[Step 2: Identifying Barriers and Benefits](#)

[Step 3: Developing Strategies](#)

[Commitment: Good Intentions to Action](#)

[Social Norms: Building Community Support](#)

[Social Diffusion: Speeding Adoption](#)

[Prompts: Remembering to Act](#)

[Communication: Creating Effective Messages](#)

[Incentives: Enhancing Motivation to Act](#)

[Convenience: Making it Easy to Act](#)

[Developing Strategies Revisited](#)

[Step 4: Piloting](#)

[Step 5: Broad-scale Implementation](#)

[Concluding Thoughts](#)

[Acknowledgements](#)

[References](#)

[About the Author](#)

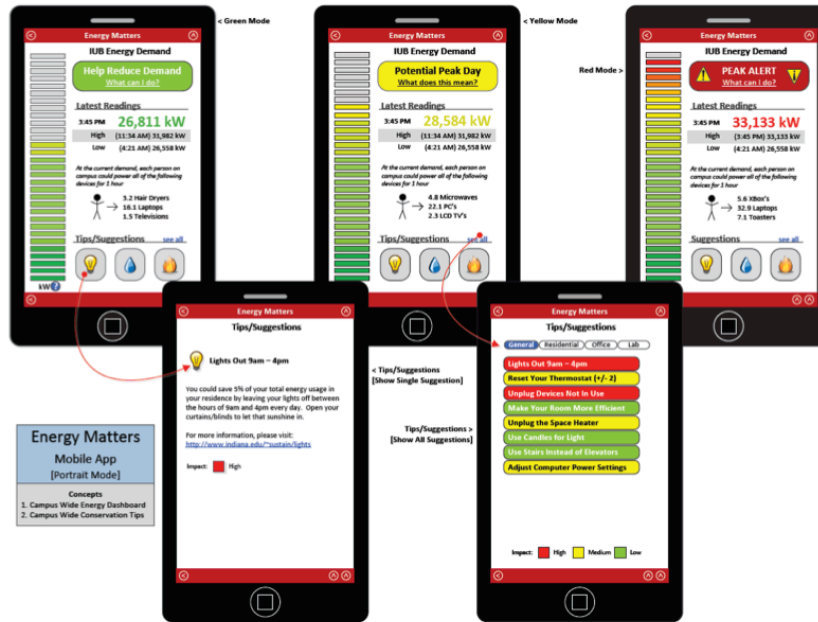


BARRIERS	TOOLS
Lack of Motivation	Commitment Norms Incentives
Forget to Act	Prompts
Lack of Social Pressure	Norms
Lack of Knowledge	Communication Social Diffusion
Structural Barriers	Convenience



INDIANA UNIVERSITY

IU Energy Matters Peak Demand App





INDIANA UNIVERSITY



Thank you!

Bill Brown
University Director of Sustainability

sustain.indiana.edu