

▶ **New Markers for ALS**

Proteins could aid diagnosis of the devastating neurological disease **19 Apr**

▶ **Cosmic Magnifier Spies a Planet**

Extrasolar planet hunters add a new trick to their repertoire **19 Apr**



▶ **GlueX Gets a Boost**

Department of Energy to fund long-planned particle physics experiment **19 Apr**

▶ **Labrador Sea Slows Its Swirl**

Slowing cog in the ocean climate machine could affect climate **16 Apr**

▶ **Sun Sets Songbirds' Compass**

Calibration keeps birds on track for long migrations **16 Apr**

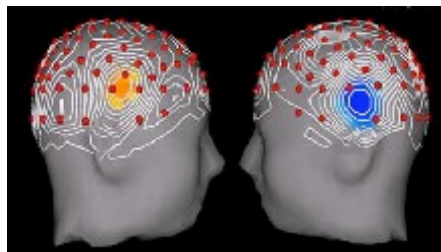


▶ **Carbon Sinks, But Does It Stay?**

Southern Ocean experiment adds new fuel to the debate over ocean fertilization **16 Apr**

▶ **New Support for 'Hygiene Hypothesis'**

Early exposure to bacteria saves mice from autoimmune disease **15 Apr**



Eureka! Just before Archimedes had the stroke of genius that sent him streaking through the streets of Syracuse babbling about buoyancy, his right superior temporal gyrus (yellow region above) may have fired up. That region is the site of insight, according to a new study--at least in people working on tricky word problems.



Mission extended. NASA says it will pony up \$15 million to keep its two Mars rovers roving for five more months. Spirit completed its 90 day mission with flying colors on 5 April, and Opportunity is poised to follow on 26 April. Spirit will head towards Columbia Hills, and Opportunity will investigate more craters to get a feel for Meridiani Planum's watery past.



Closing in on Saturn. The view of Saturn keeps getting better and better for the Cassini spacecraft. Features of the ringed planet's atmosphere, just visible in this image from 56.4 million kilometers away, should become clearer as the craft approaches Saturn and enters its orbit on 1 July.

Placing orders online at **Amersham Biosciences** is now *faster and simpler than ever.*

Shop

Order

Go

click here to learn more



▶ **One-Stop Shopping for cDNA**

New global database lends a hand to gene hunters **15 Apr**



▶ **Oldest Beads Hint at Early Art**

Recent finds suggest symbolic thinking arose earlier than thought **15 Apr**

▶ **Male Bowerbirds Aim to Please**

Flashy digs always impress, but mature females also like a song and dance **14 Apr**



▶ **Spineless Sticklebacks**

Simple change in gene activity gave freshwater species a new look **14 Apr**

▶ **A Kinder, Gentler Baboon**

Kenyan troop's peaceful culture flouts the primates' loutish reputation **13 Apr**



▶ **Long Fuse for Cambrian Explosion**

Fossils suggest diversification of life happened earlier, slower than thought **13 Apr**



Diving for thermometers.

Annual growth bands in the shells of long-lived geoduck ("gooey-duck") clams could help researchers track North Pacific ocean temperatures back to the 1800s, according to a recent paper. The midlatitude Pacific is a big player in modern climate, but its past role is unknown. To find out more, some duck-digging may be in order.

Check out AAAS's radio show **Science Update**. Five new stories every week!

What everyone else has been reading

Did you miss one of last month's 10 most popular stories? Read them here.

Interested in subscribing? See **free** sample stories

Masthead

SCIENCE MAGAZINE

SCIENCE NOW

SCIENCE'S NEXT WAVE

HIGHWIRE JOURNALS

CURRENT ISSUE OF SCIENCE

ARCHIVES OF SCIENCE MAGAZINE

SUBJECT COLLECTIONS

ARCHIVES OF SCIENCE NOW